

CROFT Model number: 25RGR32723AH19

3 beds • 2 baths • 2304 sq.ft. • 32' width • 72' depth

Our home building facilities invest in continuous product and process improvements. Plans, dimensions, features, materials, specifications and availability are subject to change without notice or obligation. Renderings and floor plans are representative likenesses of our homes and may differ from the actual homes. We invite you to tour a Home Center near you and inspect the highest value in quality housing available or call (423) 562-4533 to speak with a Home Consultant. Copyright 2017, CMH. All rights reserved.

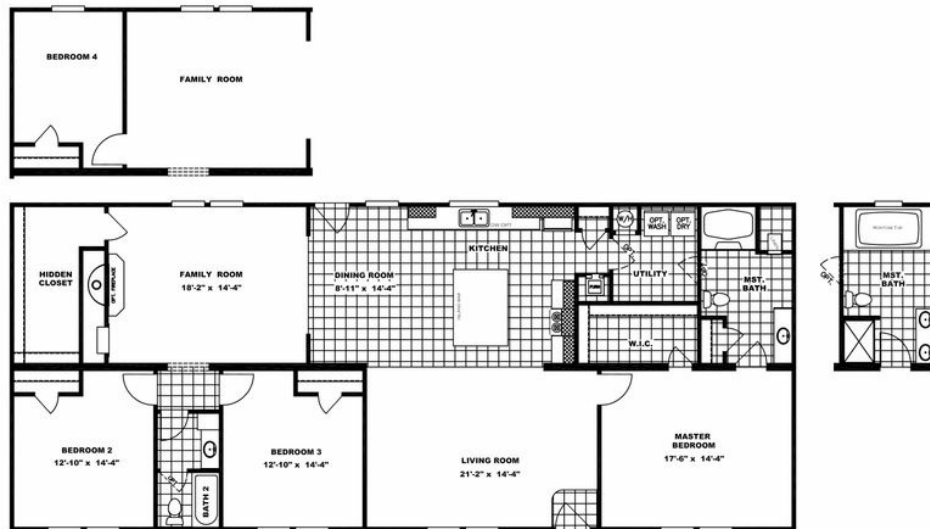
<https://www.claytonhomesofjacksboro.com>

**CLAYTON HOMES-
JACKSBORO**

**110 NORTH STREET
JACKSBORO, TN 37757**

Monday - Thursday: 9am - 7pm
Friday: 9am - 6pm
Saturday: 9am - 5pm
Sunday: Closed

(423) 562-4533



CROFT Model number: 25RGR32723AH19

3 beds • 2 baths • 2304 sq.ft. • 32' width • 72' depth

Our home building facilities invest in continuous product and process improvements. Plans, dimensions, features, materials, specifications and availability are subject to change without notice or obligation. Renderings and floor plans are representative likenesses of our homes and may differ from the actual homes. We invite you to tour a Home Center near you and inspect the highest value in quality housing available or call (423) 562-4533 to speak with a Home Consultant. Copyright 2017, CMH. All rights reserved.

<https://www.claytonhomesofjacksboro.com>

**CLAYTON HOMES-
JACKSBORO**

**110 NORTH STREET
JACKSBORO, TN 37757**

Monday - Thursday: 9am - 7pm
Friday: 9am - 6pm
Saturday: 9am - 5pm
Sunday: Closed

(423) 562-4533